

# HEALTH CARE IMPACT

## Leveraging EHRs to Improve Preventive Care

Electronic health record systems (EHRs) have great potential to help clinicians ensure that all patients reliably and safely receive the care they need. However, getting full value from an EHR requires new approaches to daily work that optimize the capabilities of the technology and the clinical team.

Acumentra Health helps Oregon medical practices make the best use of EHRs. Our EHR Preventive Care Initiative, sponsored by Medicare, engaged 26 small and mid-sized primary care practices in generating electronic data reports that summarize performance on key measures of preventive care—pneumococcal and influenza vaccination, colorectal cancer screening, and mammography. This information enables the clinics to monitor their own performance, and to identify and test opportunities to improve preventive care for patients.

- As a group, the practices improved their preventive screening performance as shown in the graph below. These improvements resulted in an estimated 6,726 additional seniors getting pneumococcal vaccinations, 2,451 more women having a biennial mammogram, and 7,747 more patients having colorectal cancer screening.
- One clinic brought its pneumococcal vaccination rate from 67% to 93%; four of its seven providers had rates higher than the 95% benchmark.

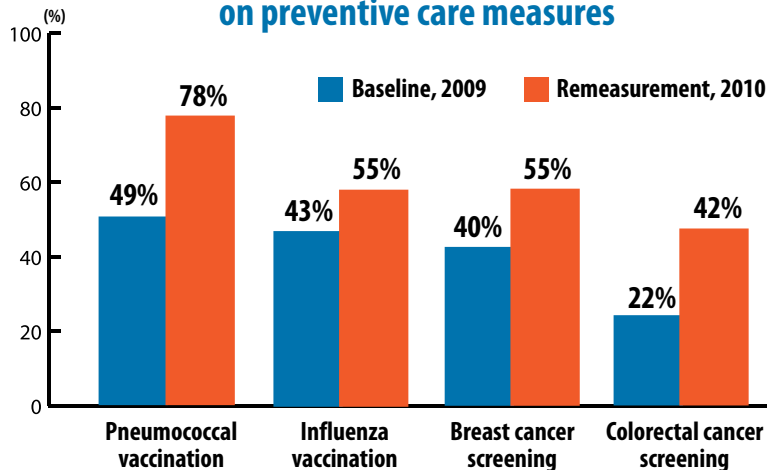


### Seeing and doing

Viewing comparative data is a key motivator for improving care. Since many practices in this initiative lacked resources for “mining” their EHR data to identify improvement needs, Acumentra Health processed their data into feedback reports that contrasted each practice’s performance with a benchmark of top-performing practices and providers. The medical director of one participating practice said:

*“These reports have helped us focus on quality. It is important to know what others are achieving, which means that we can achieve it.”*

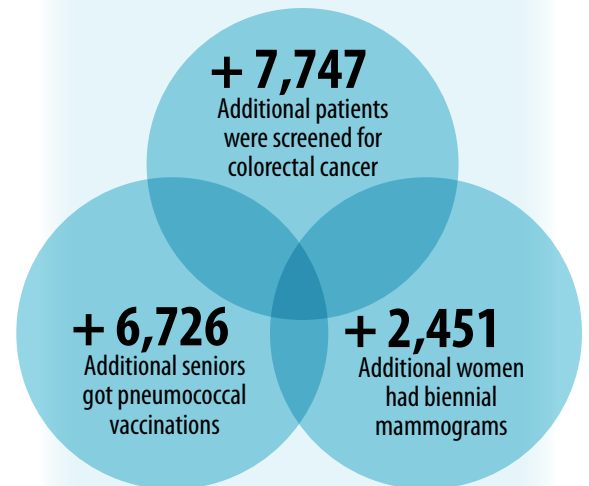
### Oregon medical practices’ performance on preventive care measures



#### Sources

**Patients receiving services:** EHR data from participating practices; calculated using CMS guidelines: (remeasurement rate – baseline rate) x at-risk population.

**Rates:** EHR data from participating practices; benchmark is based on the performance of participating providers who gave the “best” care, including at least 10% of all patients seen by providers.



This material was prepared by Acumentra Health, Oregon’s Medicare Quality Improvement Organization, under contract with the Centers for Medicare & Medicaid Services (CMS), an agency of the U.S. Department of Health and Human Services. The contents presented do not necessarily reflect CMS policy. 9SOW-OR-GEN-11-06 rev. 7/6/11